



**R J Inox LLP.**

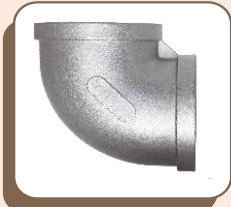
.....ahead in service

Stockist & Suppliers of :  
Stainless Steel,  
Carbon Steel,  
Alloy Steel &  
Nickel Alloys Pipes,  
Sheet, Plate.

Suppliers of :  
All type of Flanges &  
Pipe Fittings



**Quality products  
will make you feel better.**



## Main Products :

### BUTT WELD FITTINGS

#### Types :

Elbow, Equal/unequal Tee, Eccentric Reducers, Caps, Cross, Return Bend, Long Piggable Bends, 3D/5D/6D/8D upto 22D, S.J/U/Expansion Bends & Swivels are manufactured according to ANSI B16.9, B16.2B, MSS SP-43, MSS SP-95 % NACE etc.

#### Material Grades :

**Carbon Steel** : A234 WPB, WPC

**Allow Steel** : A234 Wp1, Wp5, Wp9, Wp11, Wp12, Wp22, Wp91

**Stainless Steel** : A403, 304L, L/H, 310H, 316/L/H, 316 Ti, 321/H, 347?H, 904L

**Low Temperature Steel** : A420 WPL3, WPL6

**High Yield** : WPHY42, 52, 65, 70

**Copper Alloys** : Copper, Cupro Nickel, Brass, Gunmetal etc.

**Nickel Alloys** : 200, 400, K500, 600, 625, 800, 825

**High Alloys** : ALLOY 20, ALLOY C, ALLOY C276, ALLOY B2

**Duplex & Super Duplex** : A815 UNS31803, UNS31254, UNS S32750 & S32760

**Size** : 1/4 NB TOT 24" NB (above 24" NB two half Elbow upto 72" NB)

### FORGED FITTINGS

#### Types :

Elbow, tee, Union, Cross, Coup Bushing, Plug, Swage, Nipple, Welding Boss, Hexagon Nut, Hose Nipple, Bend, Adapter, Insert, Weldolet, Elbowlet, Sockolet, Theadolet, Nipolet, Letrolet, etc.

#### Material Grades :

**Carbon Steel** : ASTM A105, / A694, F42/46/52/56/60/65/70/A350 Lf3/ A350 L12

**Alloy Steel** : ASTM A182F1/F5/F9/F11/F12/F91 etc.

**Stainless Steel** : ASTM A182 F304/304L/304H/316L/317/317L/ 321/310/347/904L etc.

**Others** : Monel, Nickel, Inconel, Hastalloy, Copper, Brass, Bronze, Titanium, Tantalum, Bismuth, Aluminium, High Speed Steel, Zink, Lead, etc.

**Size** : 1/4" NB to 4" NB (Socketweld & Threaded)

**Class** : 3000#, 6000#, 9000#

### FLANGES

#### Types :

Weldneck, Slipon, Blind, Socket Weld, Lap Joint, Spectacles, Ring Joint, Orific, Long Weldneck, Desck Flange, etc.

#### Material Grades :

**Carbon Steel** : ASTM A105/A694/F42/46/52/56/60/65/70/A350 LF3/A350 Lf2, C22.8, etc.

**Alloy Steel** : ASTM A182 F1/F5/F9/F11/F12/F91 etc.

**Stainless Steel** : ASTM A182 F304/304L/304H/316L.317/317L/321/ 310/347/904 etc.

**Others** : Monel, Nickel, Inconel, Hastalloy, Copper, Brass, Bronze, Titanium, Tantalum, Bismuth, Aluminium, High Speed Steel, Zink, Lead, etc.

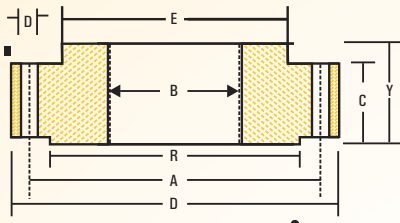
**Size** : 1/2"NB to 24" NB (above 24" as per Customers Requirement)

**Class** : 150#, 300#, 400#, 600#, 900#, 1599# & 2500#.

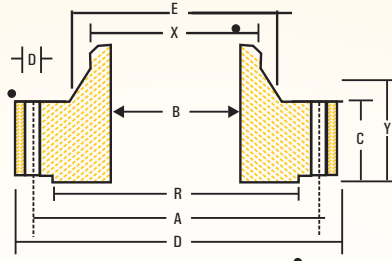




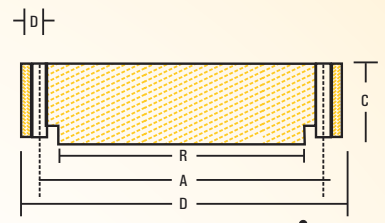
## Dimensions of Flanges ANSI B 16.5



SLIP - ON



WELDING NECK



BLIND

### CLASS 150

Normal Pipe Size	Outside Diameter of Flange O	Dia of Bolt Circle A	Dia of Bolt Holes D	No of Holes	Thickness of Flange C	Hub		Length Through Hub			Bore		SCH STD W/N B	Diameter of R/F R	Depth of Socket F
						Diameter of Hub E	Hub of Win X	S/O & S/W Y	W/N Y	L/J Y	S/O & S/W B	L/J B			
15	88.9	50.0	15.9	1	11.1	30.2	21.33	15.9	47.6	15.9	22.3	22.9	15.70	34.9	9.5
20	98.4	69.8	15.9	1	12.7	38.1	26.67	15.9	52.4	15.9	27.7	28.2	20.80	42.9	11.1
25	107.9	79.4	15.9	4	14.3	49.2	33.40	17.5	55.6	17.5	34.5	35.0	28.60	50.8	12.7
30	117.5	88.9	15.9	4	15.9	25.7	42.16	20.6	57.1	20.6	43.2	43.7	35.0	63.5	14.3
40	127.0	98.4	15.9	4	17.5	65.1	48.26	22.2	61.9	22.2	49.5	50.0	40.80	73.0	15.9
50	152.4	120.6	19.0	4	19.0	77.8	60.31	25.4	63.5	25.4	62.0	62.5	53.30	92.1	17.5
65	177.8	199.7	19.0	4	22.2	90.5	73.02	28.6	69.8	28.6	74.7	75.4	62.40	104.8	19.0
80	190.5	152.4	19.0	4	23.8	107.9	88.90	30.2	69.8	30.2	90.7	91.4	77.90	127.0	20.6
100	228.6	190.5	19.0	8	23.8	134.9	114.30	33.3	76.2	33.3	116.1	116.8	102.20	157.2	23.8
125	254.0	215.9	22.2	8	23.8	163.5	141.30	36.5	88.9	36.5	143.8	144.5	128.10	185.7	23.8
150	279.4	241.3	22.2	8	25.4	192.1	168.27	39.78	88.9	39.7	170.7	171.4	154.00	215.9	27.0
200	342.9	298.4	22.2	8	28.6	246.1	219.07	44.4	101.6	44.4	221.5	222.2	202.70	269.9	31.7
250	406.4	361.9	25.4	12	30.2	304.8	173.05	46.2	101.6	49.2	276.3	277.4	254.50	323.8	33.3
300	482.6	431.8	25.4	12	31.8	365.1	323.85	55.6	114.3	55.6	327.1	328.2	304.80	381.0	39.7
350	533.4	476.2	28.6	12	34.9	400.0	355.60	57.1	127.0	79.4	359.1	380.2	336.50	412.7	41.3
400	596.9	539.7	28.6	16	36.5	457.2	406.40	63.5	127.0	87.3	410.5	411.2	387.30	496.9	44.4
450	635.0	577.8	31.7	16	39.7	504.8	457.20	68.3	139.7	96.8	461.8	462.3	438.10	533.4	49.2
500	698.5	365.0	31.7	20	42.9	558.8	508.00	73.0	144.5	103.2	513.1	514.3	488.90	584.2	54.0
600	812.8	749.3	34.9	20	47.6	663.6	609.60	82.5	152.4	111.1	615.9	615.9	590.50	692.1	63.5

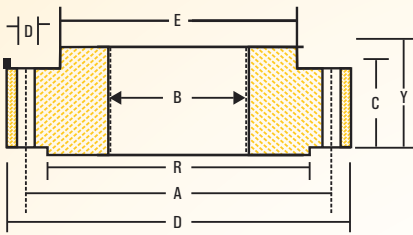
### CLASS 300

Normal Pipe Size	Outside Diameter of Flange O	Dia of Bolt Circle A	Dia of Bolt Holes D	No of Holes	Thickness of Flange C	Hub		Length Through Hub			Bore		SCH STD W/N B	Diameter of R/F R	Depth of Socket F
						Diameter of Hub E	Hub of Win X	S/O & S/W Y	W/N Y	L/J Y	S/O & S/W B	L/J B			
15	95.2	66.7	15.9	4	14.3	38.1	21.33	22.2	52.4	22.2	22.3	22.9	15.70	34.9	9.5
20	117.5	82.5	19.0	4	15.9	47.6	26.67	25.4	57.1	25.4	27.7	28.2	20.80	42.9	11.1
25	123.8	88.9	19.0	4	17.5	54.9	33.40	27.0	61.9	27.0	34.5	35.0	26.60	50.8	12.7
30	133.3	98.4	19.0	4	19.0	63.5	42.16	27.0	55.1	27.0	43.2	43.7	35.0	63.5	14.3
40	155.6	114.3	22.2	4	20.6	69.8	48.26	30.2	68.3	30.2	49.5	50.0	40.80	73.0	15.9
50	165.1	127.0	19.0	8	22.2	84.1	60.31	33.3	69.8	33.3	62.0	62.5	53.30	92.1	17.5
65	190.5	149.2	22.2	8	25.4	100.0	73.02	38.1	76.2	38.1	74.7	75.4	80.40	104.8	19.0
80	209.5	168.3	22.2	8	28.6	117.5	88.90	42.9	79.4	42.9	90.7	91.4	77.90	127.0	20.6
100	254.0	200.0	22.2	8	31.8	146.0	114.30	47.6	85.7	47.6	116.1	116.8	102.20	157.2	23.8
125	279.4	234.9	22.2	8	34.9	177.8	141.30	50.8	98.4	50.8	143.8	144.5	128.10	185.7	-
150	317.5	269.9	22.2	12	36.5	206.4	168.27	52.4	98.4	52.4	190.7	171.4	154.00	215.9	-
200	381.0	330.2	25.4	12	41.3	260.3	219.07	61.9	111.1	64.9	221.5	222.2	202.70	269.9	-
250	444.5	387.3	28.6	16	47.6	320.7	273.05	66.7	117.5	95.2	276.3	277.4	254.50	323.8	-
300	520.7	450.8	31.7	16	50.8	374.6	323.85	73.0	130.2	101.6	327.1	328.2	304.80	381.0	-
350	584.2	514.3	31.7	20	54.0	425.4	355.60	76.2	142.9	111.1	359.1	362.2	336.50	412.7	-
400	641.7	571.5	34.9	20	57.2	482.6	406.40	82.5	146.0	120.6	410.5	411.2	387.30	496.9	-
450	711.2	628.5	34.9	24	50.3	533.4	457.20	88.9	158.7	130.2	461.8	460.3	438.10	533.4	-
500	774.	685.6	64.9	24	83.5	587.4	508.00	95.2	161.9	139.7	513.1	514.3	488.90	584.2	-
600	914.4	812.8	41.3	24	69.8	701.7	609.60	106.4	168.3	152.4	615.9	615.9	590.50	692.1	-

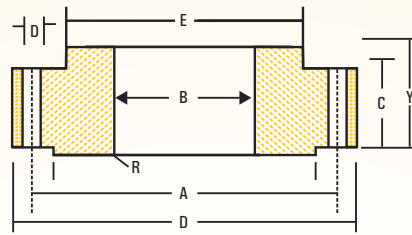
● All Dimension are in millimeters ● Flanges except Lap Joint will furnished with (6.35) Raised Face, which is included in 'Thickness' (C) ' and' Length through Hub (Y) '.



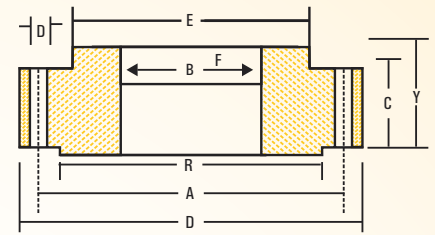
## DIMENSION OF FLANGES ANSI B 16.5



**THREADED**



**LAP JOINT**



**SOCKET WELD**

### CLASS 600

Normal Pipe Size (In mm.)	Outside Diameter of Flange O	Dia of Bolt Circle A	Dia of Bolt Holes D	No of Holes	Thickness of Flange C	Hub		Length Through Hub			Bore		SCH STD W/N B	Diameter of R/F R	Depth of Socket F
						Diameter of Hub E	Hub of Win X	S/O & S/W Y	W/N Y	L/J Y	S/O & S/W B	L/J B			
15	95.2	66.7	15.9	4	14.3	38.1	21.33	22.2	52.4	22.3	22.3	22.8	15.70	34.9	9.5
20	117.5	82.5	19.0	4	15.9	47.6	26.67	15.4	57.1	25.4	17.7	28.1	20.80	42.9	11.1
25	123.8	88.9	19.0	4	17.5	54.0	33.40	47.0	61.9	26.9	34.5	35.0	26.60	50.8	12.7
32	133.3	98.4	19.0	4	20.8	83.5	42.16	28.6	66.7	28.4	43.2	43.6	35.00	62.5	17.0
40	155.6	114.3	22.2	4	22.2	69.8	48.26	31.7	69.8	31.7	49.5	50.0	40.80	73.0	15.8
50	1165.1	127.0	19.0	8	25.4	84.1	80.64	36.5	73.0	36.5	62.0	62.4	53.30	92.1	17.4
65	190.5	149.2	22.2	8	26.6	100.0	73.02	41.6	79.4	41.1	74.7	75.4	62.40	104.8	19.0
80	209.5	168.3	22.2	8	31.8	117.5	88.90	46.0	82.5	45.9	90.7	91.4	77.90	127.0	-
100	273.0	215.9	25.4	8	38.1	152.4	114.30	54.0	101.6	53.8	116.1	116.8	102.20	157.0	-
125	330.2	266.7	28.6	8	44.4	188.9	141.30	50.3	114.3	60.4	143.8	141.5	128.10	185.7	-
150	355.6	292.1	28.6	12	47.6	222.2	168.27	66.7	117.6	56.5	170.4	171.4	154.00	215.9	*
200	-41931	349.2	31.7	12	55.6	273.0	21907	76.2	133.3	76.2	221.5	222.2	202.70	269.9	-
250	508.0	431.8	34.9	16	63.5	342.9	273.05	58.7	152.4	111.2	276.3	277.3	254.50	323.8	-
300	-555.8	488.9	34.9	20	66.7	400.0	323.85	92.1	155.6	117.3	327.1	328.1	304.80	381.0	-
350	603.2	527.9	38.1	20	29.9	431.8	355360	93.7	165.1	127.0	259.1	260.1	336.50	412.7	-
400	685.8	603.2	41.3	20	76.2	495.2	406.40	106.4	17.8	139.7	410.6	411.2	38730	469.9	-
450	742.9	654.0	44.4	20	82.6	546.1	457.20	117.5	184.1	152.4	461.8	162.2	492.10	533.4	-
500	812.8	723.9	44.4	24	88.9	609.6	508.00	127.0	190.5	165.1	513.1	514.3	488.90	584.2	-
600	939.8	838.2	50.8	24	101.6	717.6	609.60	1939.7	203.2	184.1	625.19	615.9	590.50	693.1	-

### CLASS 900

Normal Pipe Size (In mm.)	Outside Diameter of Flange O	Dia of Bolt Circle A	Dia of Bolt Holes D	No of Holes	Thickness of Flange C	Hub		Length Through Hub			Bore		SCH STD W/N B	Diameter of R/F R	Depth of Socket F
						Diameter of Hub E	Hub of Win X	S/O & S/W Y	W/N Y	L/J Y	S/O & S/W B	L/J B			
15	120.6	82.5	22.2	4	22.2	38.1	21.33	31.7	60.3	31.7	22.3	22.8	15.70	34.9	9.5
20	130.2	88.9	22.2	4	25.4	44.4	26.67	34.9	69.8	35.0	27.7	28.1	20.80	42.9	11.1
25	149.2	101.6	25.4	4	28.6	52.4	33.40	41.3	73.0	41.1	34.5	35.0	26.60	50.8	12.7
32	158.7	111.1	25.4	4	28.6	63.5	42.16	41.3	73.0	41.1	43.2	43.6	35.00	63.5	14.2
40	117.8	123.8	28.6	4	31.8	69.8	48.26	44.4	82.5	44.4	49.5	50.0	40.80	73.0	15.8
50	215.9	165.1	25.4	8	38.1	104.8	60.31	57.1	101.6	57.1	62.0	62.4	53.30	92.1	17.4
65	244.5	190.5	28.6	8	41.3	123.8	73.02	63.5	104.8	63.5	74.7	75.4	82.40	104.8	19.0
80	241.3	190.5	25.4	8	38.1	127.0	88.90	53.9	101.6	53.8	90.7	91.4	77.90	127.0	-
100	292.1	234.9	31.7	8	44.4	158.7	114.30	69.8	114.3	69.8	114.0	116.8	102.20	157.1	-
125	349.2	279.4	35.0	8	50.8	190.5	141.30	79.3	127.0	79.2	143.7	144.5	128.10	185.7	-
150	381.0	317.5	31.7	12	55.6	2349	168.27	85.8	139.7	85.8	170.6	171.4	154.00	215.9	-
200	289.8	393.7	38.1	12	963.5	298.4	219.07	101.6	162.0	144.3	221.4	222.2	202.70	2669.8	-
250	545.1	496.9	38.1	16	69.8	368.3	273.05	107.9	184.1	127.0	276.30	277.3	254.50	323.8	-
300	609.8	533.4	38.1	20	79.3	418.1	323.85	117.4	200.0	142.7	327.1	328.1	307.80	381.0	-



**B.S. 10 Table "D"**

Normal Pipe Size (In mm.)	Diameter of Flange mm	Diameter of Bolt Circle (PCD) mm	Number of Bolt	Diameter of Bolt mm	Thickness of Flange mm
15	95	67	4	13	5
20	102	73	4	13	5
25	114	83	4	13	5
32	121	87	4	13	6
40	133	98	4	13	6
50	152	114	4	16	8
65	165	127	4	16	8
80	184	145	4	16	10
100	216	178	4	16	10
125	254	210	8	16	13
150	279	235	8	16	13
200	337	292	8	16	13
250	406	356	8	19	16
300	457	406	12	19	16
350	527	470	12	22	19
400	578	521	12	22	19
450	641	584	12	22	22
500	705	641	16	22	25
600	826	756	16	25	29

**B.S. 10 Table "E"**

Normal Pipe Size (In mm.)	Diameter of Flange mm	Diameter of Bolt Circle (PCD) mm	Number of Bolt	Diameter of Bolt mm	Thickness of Flange mm
15	95	67	4	13	6
20	102	73	4	13	6
25	114	83	4	13	7
32	121	87	4	13	8
40	133	98	4	13	9
50	152	114	4	16	10
65	165	127	4	16	10
80	184	145	4	16	11
100	216	178	8	16	13
125	254	210	8	16	14
150	279	235	8	19	17
200	337	292	8	19	19
250	406	356	12	19	22
300	457	406	12	22	25
350	527	470	12	22	25
400	578	521	12	22	25
450	641	584	16	22	29
500	705	641	16	22	32
600	826	759	16	25	38

**B.S. 10 Table "F"**

Normal Pipe Size (In mm.)	Diameter of Flange mm	Diameter of Bolt Circle (PCD) mm	Number of Bolt	Diameter of Bolt mm	Thickness of Flange mm
15	95	67	4	13	10
20	102	73	4	13	10
25	121	87	4	16	10
32	133	98	4	16	13
40	140	105	4	16	13
50	165	127	4	16	16
65	184	145	8	16	16
80	203	165	8	16	16
100	229	191	8	19	19
125	279	235	8	19	22
150	305	260	12	19	22
200	368	324	12	20	25
250	432	381	12	22	25
300	489	438	16	22	29
350	552	495	16	25	32
400	610	552	20	25	32
450	673	610	20	29	35
500	737	673	24	29	38
600	851	781	24	32	38

**B.S. 10 Table "H"**

Normal Pipe Size (In mm.)	Diameter of Flange mm	Diameter of Bolt Circle (PCD) mm	Number of Bolt	Diameter of Bolt mm	Thickness of Flange mm
15	114	83	4	16	13
20	114	83	4	16	13
25	121	81	4	16	14
32	133	98	4	16	17
40	140	105	4	16	17
50	165	127	4	16	19
65	184	145	4	16	11
80	203	165	8	16	22
100	229	191	8	16	25
125	279	235	8	19	29
150	305	260	12	19	29
200	368	324	12	19	32
250	432	381	12	22	35
300	489	438	16	22	38
350	552	495	16	25	41
400	610	552	20	25	44
450	673	610	20	29	48
500	737	673	21	29	51
600	851	781	24	32	57



## CLASS 1500

Normal Pipe Size (In mm.)	Outside Diameter of Flange O	Dia of Bolt Circle A	Dia of Bolt Holes D	No of Holes	Thickness of Flange C	Hub		Length Through Hub			Bore		SCH STD W/N B	Diameter of R/F R	Depth of Socket F
						Diameter of Hub E	Hub of Win X	S/O & S/W Y	W/N Y	L/J Y	S/O & S/W B	L/J B			
15	120.6	82.5	22.2	4	22.2	37.1	21.33	31.7	60.3	31.7	22.3	22.8	5.70	31.9	9.5
20	130.2	88.9	22.2	4	25.4	44.4	16.67	34.9	69.8	34.9	27.7	28.1	20.80	42.9	11.1
25	149.2	101.6	25.4	4	28.6	52.4	33.40	41.3	73.0	41.3	34.5	35.0	26.50	50.8	12.7
32	158.7	111.1	25.4	4	28.6	63.5	41.16	41.3	73.0	41.3	43.2	43.6	35.00	63.5	14.2
40	177.8	123.8	28.6	4	31.8	59.8	48.26	44.4	82.50	44.4	49.5	50.0	40.80	73.0	15.8
50	215.9	165.1	25.4	8	38.1	104.8	60.31	57.1	101.6	57.1	62.0	62.0	53.30	92.1	17.4
65	244.5	190.5	28.6	8	41.3	123.8	73.02	63.5	104.8	63.5	74.7	75.4	62.40	104.8	19.0
80	266.7	203.2	31.7	8	47.6	133.3	88.90	73.0	117.5	73.0	90.7	91.4	77.90	127.0	-
100	311.1	214.3	34.9	8	54.0	161.9	114.30	90.5	123.0	90.4	116.1	116.8	102.20	157.2	-
125	374.6	292.1	41.3	8	73.0	196.8	141.30	104.8	166.6	104.8	143.6	144.5	128.10	185.7	-
150	393.7	317.5	38.1	12	82.6	228.6	198.27	119.1	171.4	119.1	170.7	171.4	154.00	215.9	-
200	482.6	393.7	44.4	12	92.1	292.1	219.07	142.9	212.7	142.8	221.5	222.2	202.70	263.9	-
250	584.2	482.6	50.8	12	107.9	368.3	273.05	158.7	241.0	177.8	276.3	277.3	254.50	323.8	-
300	673.1	571.5	54.0	16	123.8	450.8	323.85	181.0	282.5	218.9	327.1	328.1	304.80	381.0	-

## CLASS 2500

Normal Pipe Size (In mm.)	Outside Diameter of Flange O	Dia of Bolt Circle A	Dia of Bolt Holes D	No of Holes	Thickness of Flange C	Hub		Length Through Hub			Bore		SCH STD W/N B	Diameter of R/F R	Depth of Socket F
						Diameter of Hub E	Hub of Win X	S/O & S/W Y	W/N Y	L/J Y	S/O & S/W B	L/J B			
15	133.3	88.9	22.2	4	30.2	42.9	21.33	39.7	73.0	39.7	22.3	22.3	15.70	34.9	-
20	139.7	95.2	22.2	4	31.7	50.8	26.67	42.9	79.4	42.9	27.7	27.7	20.80	42.9	-
25	158.7	107.9	25.4	4	34.9	57.1	33.40	47.7	88.9	47.7	34.5	34.5	26.60	50.8	-
32	184.1	130.2	28.6	4	38.1	73.0	42.16	52.4	95.2	52.4	43.2	43.2	35.00	63.5	-
40	203.2	146.0	31.7	4	44.4	79.4	48.26	60.3	111.1	60.3	49.5	18.5	40.80	73.0	-
50	234.9	171.4	28.6	8	50.8	95.2	60.31	69.8	127.0	69.8	62.4	62.0	53.30	92.1	-
65	266.7	196.8	31.7	8	57.1	114.3	73.02	19.4	412.9	79.4	74.7	74.7	62.40	104.8	-
80	304.8	228.6	34.9	8	66.7	133.3	88.90	92.1	168.3	92.1	90.7	90.7	77.90	127.0	-
100	24405	273.0	41.3	8	76.2	165.1	114.30	107.9	190.5	107.9	116.1	116.1	102.20	157.2	-
125	419.1	323.8	47.6	8	92.1	203.2	141.30	130.0	228.6	130.0	143.8	143.8	128.10	185.7	-
150	482.6	358.3	54.0	8	107.9	234.9	168.27	152.4	273.0	152.4	170.7	170.7	154.00	215.9	-
200	552.4	438.1	54.0	12	127.0	304.8	219.07	177.8	314.5	177.8	221.5	221.5	202.70	269.9	-
250	673.1	539.7	66.7	12	165.1	374.6	273.95	228.6	419.1	228.6	276.3	276.3	254.50	323.8	-
300	762.0	619.1	73.0	12	184.1	441.3	323.85	254.0	463.5	254.0	327.1	327.1	304.80	381.0	-

## DIMENSIONAL TOLERANCE

Welding Neck			
Outside Diameter	O.D. 500 or smaller		+1.6
			+3.1
Inside Diameter (Bore)	250 and smaller		+0.7
			+1.5
	500 and Larger	+3.1	+1.6
Diameter of Contact Face	1.6 raised face	+0.7	
	6.3 raised face longue & grooved made and female	+0.4	
Diameter of Hub at Base	When E is 600 or smarter	+1.6	
	When E is over 600	+3.1	
Diameter of Hub at Point of Welding	125 and smaller	+0.7	+0.7
	150 and larger	+4.0	+0.0
Thickness	450 and smaller	+3.1	-0.0
	500 and larger	+4.7	-0.0
Length through Hub	250 and smaller		+1.6
	300 and larger		+3.1
	Boll orde		+1.6
Drilling	Boll hole spacing		+0.7
	Eccentricity with respect to bore		0.7 max

Threaded, Slip on, Lap joint socket Welding and Blind			
Outside Diameter	O.D. 50 or smaller		+1.6
			+3.1
Inside Diameter (Bore)	Threaded : to standard gauge limits		
	250 and smaller	+0.7	-0.0
	350 and larger	+1.6	-0.0
	Threadad		
Diameter of Contact Bore	250 and smaller	+0.7	-0.0
	350 and larger	+1.6	-0.0
● Outside Diameter of Hub	300 and smaller	+2.3	-1.6
	350 and larger		+3.1
Diameter of Contact Face	16 raised face		+0.7
	6.3 raised face longue & grooved male and female		+0.4
Thickness	450 and smaller	+3.1	-0.0
	500 and larger	+4.7	-0.0
● Length through Hub	250 and smaller		+1.6
	300 and larger		+3.1
	Boll orde		+1.6
Drilling	Boll hole spacing		+0.7
	Eccentricity with respect to bore		0.7 max

All Dimension are in millimeters ● Flanges except Lap Join will furnished with (6.35) Raised Face, which is included in 'Thickness' (C) ' and' Length through Hub (Y) '



## CLASS 1500

Normal Pipe Size (In mm.)	Outside Diameter of Flange O	Dia of Bolt Circle A	Dia of Bolt Holes D	No of Holes	Thickness of Flange C	Hub		Length Through Hub			Bore		SCH STD W/N B	Diameter of R/F R	Depth of Socket F
						Diameter of Hub E	Hub of Win X	S/O & S/W Y	W/N Y	L/J Y	S/O & S/W B	L/J B			
15	120.6	82.5	22.2	4	22.2	37.1	21.33	31.7	60.3	31.7	22.3	22.8	15.70	31.9	9.5
20	130.2	88.9	22.2	4	25.4	44.4	16.67	34.9	69.8	34.9	27.7	28.1	20.80	42.9	11.1
25	149.2	101.6	25.4	4	28.6	52.4	33.40	41.3	73.0	41.3	34.5	35.0	26.50	50.8	12.7
32	158.7	111.1	25.4	4	28.6	63.5	41.16	41.3	73.0	41.3	43.2	43.6	35.00	63.5	14.2
40	177.8	123.8	28.6	4	31.8	59.8	48.26	44.4	82.50	44.4	49.5	50.0	40.80	73.0	15.8
50	215.9	165.1	25.4	8	38.1	104.8	60.31	57.1	101.6	57.1	62.0	52.0	53.30	92.1	17.4
65	244.5	190.5	28.6	8	41.3	123.8	73.02	63.5	104.8	63.5	74.7	75.4	62.40	104.8	19.0
80	266.7	203.2	31.7	8	47.6	133.3	88.90	73.0	117.5	73.0	90.7	91.4	77.90	127.0	-
100	311.1	214.3	34.9	8	54.0	161.9	114.30	90.5	123.0	90.4	116.1	116.8	102.20	157.2	-
125	374.6	292.1	41.3	8	73.0	196.8	141.30	104.8	166.6	104.8	143.6	144.5	128.10	185.7	-
150	393.7	317.5	38.1	12	82.6	228.6	198.27	119.1	171.4	119.1	170.7	171.4	154.00	215.9	-
200	482.6	393.7	44.4	12	92.1	292.1	219.07	142.9	212.7	142.8	221.5	222.2	202.70	263.9	-
250	584.2	482.6	50.8	12	107.9	368.3	273.05	158.7	241.0	177.8	276.3	277.3	254.50	323.8	-
300	673.1	571.5	54.0	16	123.8	450.8	323.85	181.0	282.5	218.9	327.1	328.1	304.80	381.0	-

## CLASS 2500

Normal Pipe Size (In mm.)	Outside Diameter of Flange O	Dia of Bolt Circle A	Dia of Bolt Holes D	No of Holes	Thickness of Flange C	Hub		Length Through Hub			Bore		SCH STD W/N B	Diameter of R/F R	Depth of Socket F
						Diameter of Hub E	Hub of Win X	S/O & S/W Y	W/N Y	L/J Y	S/O & S/W B	L/J B			
15	133.3	88.9	22.2	4	30.2	42.9	21.33	39.7	73.0	39.7	22.3	22.3	15.70	34.9	-
20	139.7	95.2	22.2	4	31.7	50.8	26.67	42.9	79.4	42.9	27.7	27.7	20.80	42.9	-
25	158.7	107.9	25.4	4	34.9	57.1	33.40	47.7	88.9	47.7	34.5	34.5	26.60	50.8	-
32	184.1	130.2	28.6	4	38.1	73.0	42.16	52.4	95.2	52.4	43.2	43.2	35.00	63.5	-
40	203.2	146.0	31.7	4	44.4	79.4	48.26	60.3	111.1	60.3	49.5	18.5	40.80	73.0	-
50	234.9	171.4	28.6	8	50.8	95.2	60.31	69.8	127.0	69.8	62.4	62.0	53.30	92.1	-
65	266.7	196.8	31.7	8	57.1	114.3	73.02	19.4	412.9	79.4	74.7	74.7	62.40	104.8	-
80	304.8	228.6	34.9	8	66.7	133.3	88.90	92.1	168.3	92.1	90.7	90.7	77.90	127.0	-
100	244.05	273.0	41.3	8	76.2	165.1	114.30	107.9	190.5	107.9	116.1	116.1	102.20	157.2	-
125	419.1	323.8	47.6	8	92.1	203.2	141.30	130.0	228.6	130.0	143.8	143.8	128.10	185.7	-
150	482.6	358.3	54.0	8	107.9	234.9	168.27	152.4	273.0	152.4	170.7	170.7	154.00	215.9	-
200	552.4	438.1	54.0	12	127.0	304.8	219.07	177.8	314.5	177.8	221.5	221.5	202.70	269.9	-
250	673.1	539.7	66.7	12	165.1	374.6	273.95	228.6	419.1	228.6	276.3	276.3	254.50	323.8	-
300	762.0	619.1	73.0	12	184.1	441.3	323.85	254.0	463.5	254.0	327.1	327.1	304.80	381.0	-

## DIMENSIONAL TOLERANCE

Welding Neck			
Outside Diameter	O.D. 500 or smaller		+1.6
			+3.1
Inside Diameter (Bore)	250 and smaller		+0.7
			+1.5
	500 and Larger	+3.1	+1.6
● Diameter of Contact Face	1.6 raised face	+0.7	
	6.3 raised face longue & grooved male and female	+0.4	
Diameter of Hub at Base	When E is 600 or smarter	+1.6	
	When E is over 600	+3.1	
Diameter of Hub at Point of Welding	125 and smaller	+0.7	
	150 and larger	+4.0	+0.7
			+0.0
Thickness	450 and smaller	+3.1	-0.0
	500 and larger	+4.7	-0.0
Length through Hub	250 and smaller		+1.6
	300 and larger		+3.1
	Boll orde		+1.6
Drilling	Boll hole spacing		+0.7
	Eccentricity with respect to bore		0.7 max

Threaded, Slip on, Lap joint socket Welding and Blind			
Outside Diameter	O.D. 50 or smaller		+1.6
			+3.1
Inside Diameter (Bore)	Threaded : to standard gauge limits		
	250 and smaller	+0.7	-0.0
	350 and larger	+1.6	-0.0
	Threadad		
Diameter of Contact Bore	250 and smaller	+0.7	-0.0
	350 and larger	+1.6	-0.0
● Outside Diameter of Hub	300 and smaller	+2.3	-1.6
	350 and larger		+3.1
Diameter of Contact Face	16 raised face		
	6.3 raised face longue & grooved male and female		+0.7
			+0.4
Thickness	450 and smaller	+3.1	-0.0
	500 and larger	+4.7	-0.0
● Length through Hub	250 and smaller		+1.6
	300 and larger		+3.1
	Boll orde		+1.6
Drilling	Boll hole spacing		+0.7
	Eccentricity with respect to bore		0.7 max

● All Dimension are in millimeters ● Flanges except Lap Join will furnished with (6.35) Raised Face, which is included in ' Thickness ' (C) ' and ' Length through Hub (Y) '





## APPLICATIONS

- ➔ Oil & Gas Refineries
- ➔ Boiler & Pressure Vessel
- ➔ Chemical Industries
- ➔ Fertilizers Industries
- ➔ Petroleum Industries
- ➔ Pharmaceutical Industries
- ➔ Sugar Industries
- ➔ Heat Exchanger
- ➔ Thermal & Nuclear Power Plants
- ➔ Automobile Industries
- ➔ Condensers
- ➔ Dairies
- ➔ Defense
- ➔ Furniture
- ➔ Hydraulic & Pneumatic Systems
- ➔ Instrumentation
- ➔ Ornamental & Hardware Appliances
- ➔ Railways
- ➔ Solvent Plant
- ➔ Textile Machinery



**R J Inox LLP.**  
.....ahead in service

135 FF, Suvan Business Park, Soma Textile Mill Compound,  
Kewal Kanta Road, Rakhial, Ahmedabad-382330. (Gujarat)

Mobile : +91-9099945292, 8866539177

E-mail : E-mail : [rjinoxllp@gmail.com](mailto:rjinoxllp@gmail.com)